

BusinessObjects™ Metadata Management software lets users view and analyze metadata through a thin-client Web application – to better understand relationships between metadata objects, and for end-to-end impact analysis, report-to-source data lineage, and effective management of business intelligence projects.



METADATA MANAGEMENT

BUSINESS INTELLIGENCE YOU CAN TRUST

Do decision makers in your organization doubt the accuracy of their reports because they are frustrated with outdated information, unsure of the origin of the information, or lack visibility into the related data calculations? Having reliable business intelligence has become more important than ever in today's highly competitive marketplace. Data traceability has also become essential under regulations such as the U.S. Sarbanes-Oxley Act that require the officers of public companies to confirm the accuracy of their financial statements.

As the demand for business intelligence grows, so do the available data sources, data warehouses, and business intelligence reports that you depend on for strategic business decisions. Separate departmental deployments of business intelligence solutions have created silos,

however, which make it significantly more difficult to manage the information you need. To prevent unforeseen business impacts, data architects and report designers must proactively determine the impact that changing data sources might have on the intelligence environment.

BusinessObjects™ Metadata Management software from Business Objects, an SAP company, provides reliable metadata for change impact and data lineage analysis and usage auditing. The software collects and unifies metadata from disparate tools and sources into a single repository (see Figure 1). This includes metadata from business intelligence systems and extract, transform, and load (ETL) products – as well as from relational databases, modeling tools, and third-party sources.

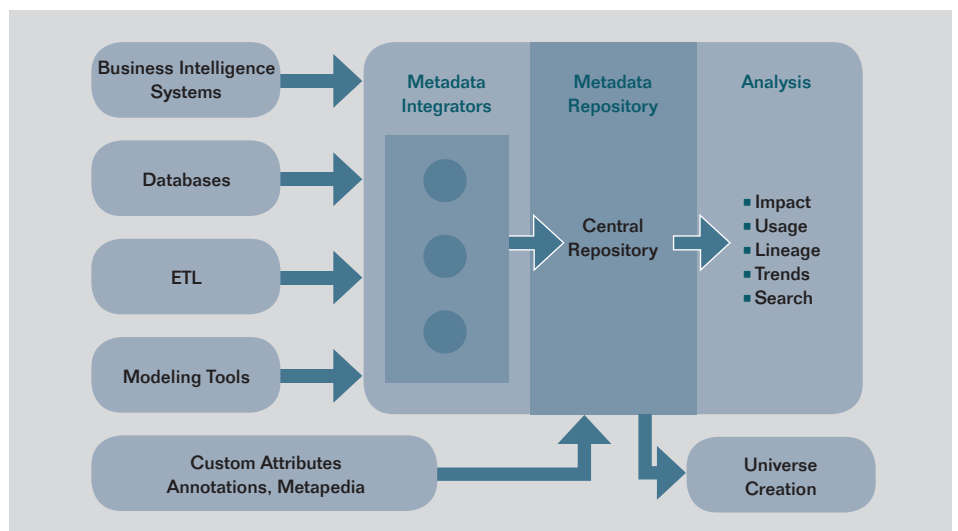


Figure 1: Functional Overview of BusinessObjects™ Metadata Management

Robust Metadata Tools for Sound Decision Making

Metadata intelligence uses metadata for a given domain to discover, understand, leverage, and manage applications and resources in that domain. It involves applying metadata in a business context, not just collecting and cataloging metadata as most solutions for metadata management do. Like business intelligence, metadata intelligence requires consolidating and relating pertinent information in a central repository for business decision making. In addition, metadata intelligence helps users understand, audit, and analyze the entire business intelligence deployment – from data sources to business intelligence reports. Metadata intelligence can help you maximize scarce IT resources and minimize custom development.

BusinessObjects Metadata Management provides the foundation for a comprehensive metadata intelligence strategy. The software includes tools for:

- Metadata integration and consolidation
- Change impact and data lineage
- Audits of business intelligence user privileges
- Integration with a BusinessObjects reporting portal
- Annotating, tagging, and supplementing metadata
- Advanced searches

Metadata Integration and Consolidation
BusinessObjects Metadata Management consolidates and integrates disparate metadata into an open, relational repository. You can consolidate metadata from your various databases, modeling tools (such as ERWin), ETL products, and business intelligence solutions. The software can also help you incorporate additional business metadata with existing objects and maintain that data. It includes comprehensive functionality for metadata browsing and searching, as well as multilanguage metadata support.

Change Impact and Data Lineage

It is key that you understand how changes in data sources would impact your data warehouse, reports, and business intelligence deployment. The impact analysis functionalities in BusinessObjects Metadata Management help you recognize the relationships between data sources, targets, and universes – and their respective documents – and thus the effect of changes to those relationships. Data lineage analysis helps you identify which sources provided the data for specific reports and see the data transformations, thereby increasing end-user confidence and providing a more accurate picture of your data architecture. You can trace the lineage of data from an end-user report back to its original data source. Such visibility can help you make more accurate business decisions and estimate the cost-of-change impact – which can, in turn, reduce your maintenance costs.

Audits of Business Intelligence User Privileges

The software can also analyze the impact of data changes on users and their associated privileges and permissions. You can analyze the universes and reports that a user or user group has access to, along with the permissions associated with this access, to determine:

- Who is impacted by changes and what business intelligence information a user can access
- What users or user groups are affected by changes to specific tables, columns, universe objects, and reports
- What privileges a user or user group has for accessing reports or data universes

Integration with a BusinessObjects Reporting Portal

BusinessObjects Metadata Management lets you view a data lineage diagram for any business intelligence object directly through a BusinessObjects reporting portal. You can see the data lineage diagram for any object associated with reports from a BusinessObjects ad hoc query and reporting tool by clicking on the lineage link for that particular object. On the data lineage diagram, you can place the mouse over the object to get additional details (see Figure 2).

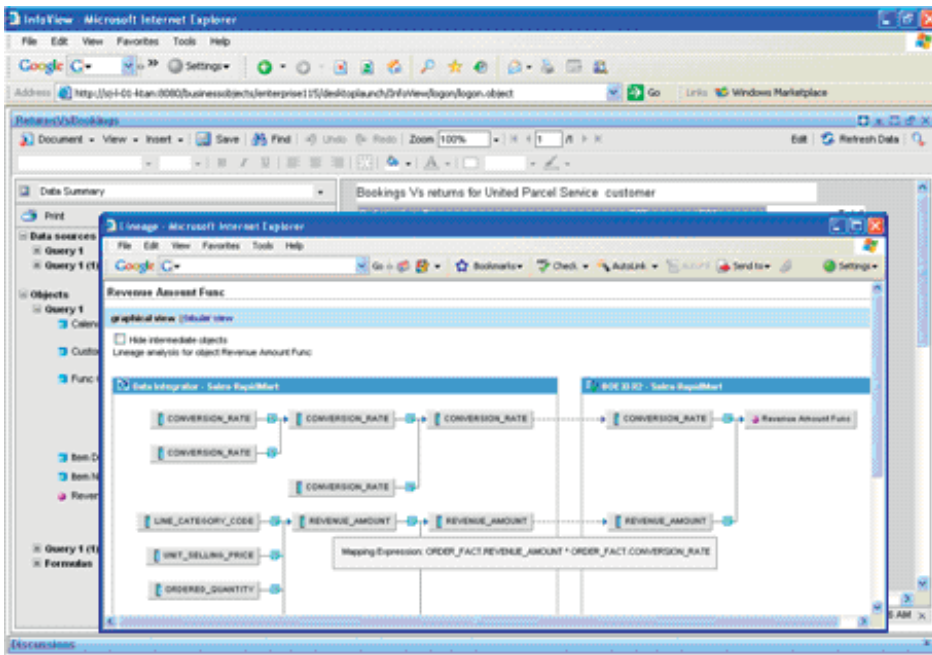


Figure 2: More Details from a Mouse-Over on the Data Lineage Diagram

Annotating, Tagging, and Supplementing Metadata

You can add information to existing objects via a Web application that organizes metadata from different sources into a directory structure that allows you to easily navigate and analyze the metadata. There is also support for adding business descriptions, assigning a data steward to objects, rating object relevancy, linking objects to Web sites, and tagging objects that contain sensitive information.

Supplementary metadata annotation lets you link user notes to any object. This essentially means that you can add "metadata to metadata" or build a Wiki that captures information that can be used at a later date.

Advanced Searches

An advanced search function lets you add multiple conditions to narrow your metadata search. You can perform a "fuzzy match" that returns objects that resemble any of the words in a "value" field. You can define each condition by object type, field, word match, or value.

Benefits of Metadata Management

BusinessObjects Metadata Management helps you optimize your business intelligence environment and infrastructure to keep pace with demands for reliable information within your enterprise. You can overcome the difficulties of managing metadata from various data sources, technologies, and

systems by consolidating and integrating metadata into an open, relational repository. With this support, you get:

- A more accurate picture of your entire business intelligence environment
- The ability to search, explore, and understand your information assets both horizontally (across different systems) and vertically (from reports to their individual data elements)
- Tools for the proactive analysis of the impact of various changes in data sources on specific reports and users
- Data traceability from reports to their data sources

By giving users across the enterprise a common, consistent, and current understanding of essential metadata traceability, the software can significantly improve decision making and regulatory compliance. By streamlining your IT workload, reducing project outlays, and improving operational efficiency, BusinessObjects Metadata Management can reduce the total cost of ownership of your business intelligence solutions.

Manage Information More Effectively

BusinessObjects Metadata Management brings all of your metadata together in one place to deliver reliable data for compliance, internal controls, and decision making. To learn more about BusinessObjects Metadata Management, visit our Web site at www.businessobjects.com/product/eim/metadata_management.asp.

Summary

BusinessObjects™ Metadata Management software from Business Objects, an SAP company, provides reliable data for change management analysis and usage auditing. The software collects and unifies metadata from disparate tools and sources into a single repository. By bringing all of your metadata together to deliver reliable data, you are in a better position to meet demands for compliance and internal controls, and to support sound business strategies.

Challenges

- Confidence in reports used for strategic decision making
- Information timeliness
- Lack of visibility into information sources and related calculations
- Management of information from disparate sources
- Effective impact analysis for changes in data sources

Supported Business Processes and Software Functions

- **Metadata integration and consolidation** – Manage disparate metadata in an open, relational repository
- **Change impact and data lineage** – Understand the relationships between data sources, targets, and universes (and their respective documents), as well as the effect of changes to those relationships
- **Audits of business intelligence user privileges** – Analyze the impact of data changes on users and their associated privileges and permissions
- **Integration with a BusinessObjects reporting portal** – View a data lineage diagram for any business intelligence object directly through a BusinessObjects portal
- **Annotating, tagging, and supplementing metadata** – Add business descriptions, assign a data steward to objects, rate object relevancy, link objects to Web sites, and tag objects that contain sensitive information
- **Advance searches** – Add multiple conditions to narrow your metadata search

Business Benefits

- Consolidation and integration of metadata into an open, relational repository
- A more accurate picture of your entire business intelligence environment
- Greater information reliability
- Improved decision making
- Enhanced compliance
- Reduced total cost of ownership for business intelligence solutions through a streamlined IT workload, reductions in project outlays, and improved operational efficiency

For More Information

Call your SAP representative or visit us online at
www.businessobjects.com/product/eim/metadata_management.asp.

50 089 019 (08/03)

©2008 by SAP AG.

All rights reserved. SAP, R/3, xApps, xApp, SAP NetWeaver, Duet, PartnerEdge, ByDesign, SAP Business ByDesign, and other SAP products and services mentioned herein as well as their respective logos are trademarks or registered trademarks of SAP AG in Germany and in several other countries all over the world. All other product and service names mentioned are the trademarks of their respective companies. Data contained in this document serves informational purposes only. National product specifications may vary.

These materials are subject to change without notice. These materials are provided by SAP AG and its affiliated companies ("SAP Group") for informational purposes only, without representation or warranty of any kind, and SAP Group shall not be liable for errors or omissions with respect to the materials. The only warranties for SAP Group products and services are those that are set forth in the express warranty statements accompanying such products and services, if any. Nothing herein should be construed as constituting an additional warranty.